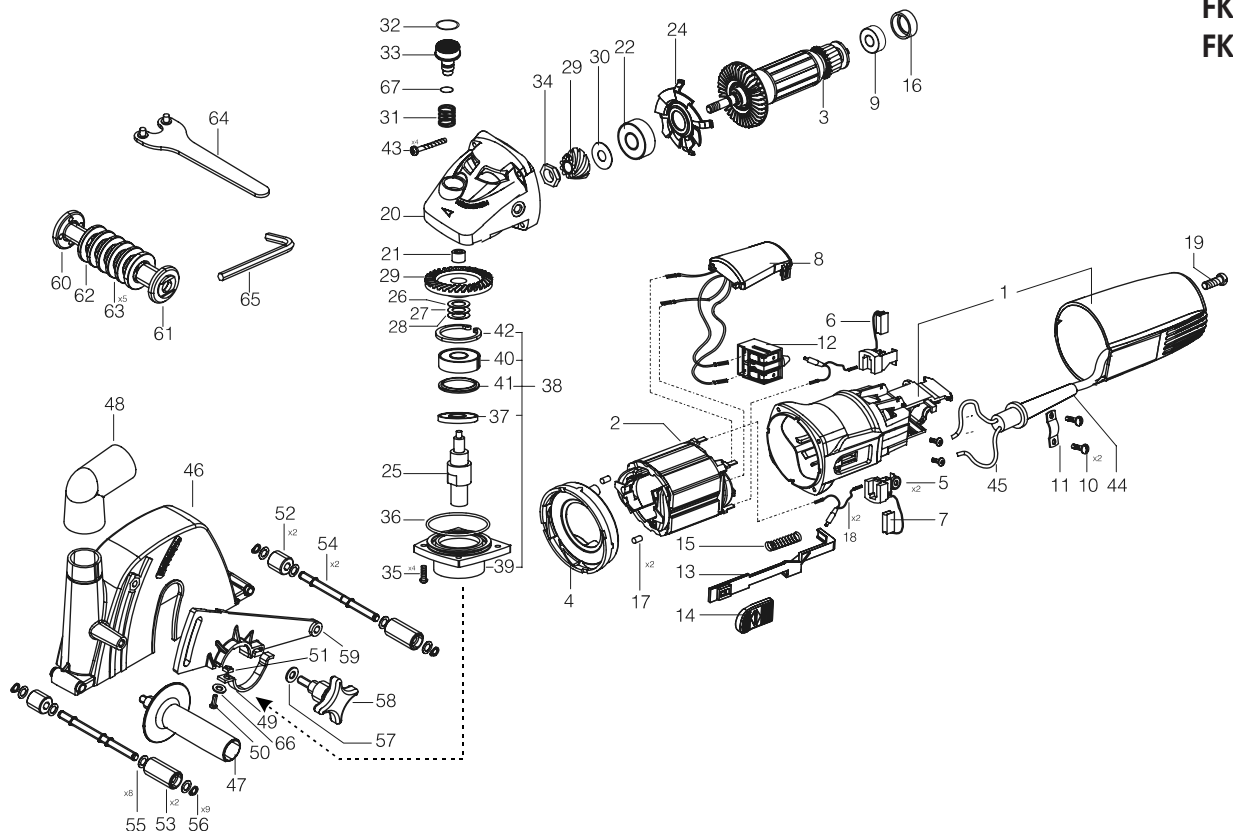


POS. No.	Ref.No.	Description
	1	153423 Body with cover
[1]	2	153478 Stator set
[2]	2	154751 Stator set
[1]	3	153870 Armature set
[2]	3	154752 Armature set
	4	152756 Diffuser
	5	129082 Brush holder set
	6	153056 Brush
	7	153057 Brush with a switch
[1]	8	153917 Electronic block
[2]	8	170552 Electronic block
	9	330582 Bearing 6262ZP6E LDS18 SKF
	10	360646 Screw 4x9,5
	11	256500 Cord clamp
[1]	12	129086 Switch
[1];[2]	12*	153548 Switch APB-21114 Defond
	13	152758 Guiding switch lever
	14	170117 Slide
	15	131214 Pressure spring 0,5x4x25
	16	129087 Elastic sleeve
	17	272960 Claming pin
	18	151196 Choke
	19	360654 Screw 4x18
	20	175498 Gear box
	21	933756 Bearing HK0709
[1]	22	330289 Bearing 6092ZP63LDS18
[1];[2]	22**	330942 Bearing 609 2RSL P63 LDS18SpA
	24	152755 Bearing cover
	25	153921 Spindle
[1]	26	117797 Spacer washer
	27	117798 Spacer washer
	28	117799 Spacer washer
	29	153428 Gear set
	30	153421 Spacer washer
	31	115165 Spring
	32	330335 O-ring 16X2B
	33	121259 Lock button
	34	117800 Nut M8x1
[1]	35	361131 Screw H2-M4x12
[2]	35	361131 Screw H2-M4x12
	36	330336 O-ring 50X2B

POS. No.	Ref.No.	Description
	37	153586 Felt 30x19,2x6
	38	154218 Bearing bed set
	39	153504 Bearing bed
	40	330718 Bearing 6300-2RS
	41	113091 Spacer washer
[1]	42	330472 Circlip A35
[1];[2]	42***	330732 Circlip A35-1D
	43	360621 Screw K4x25
	44	152759 Cord protector
[1]	45	116549 Cord with a plug
[2]	45	154704 Cord with a plug
	46	152647 Disk guard
	47	114134 Handle
	48	152651 Pipe
	49	152654 Bracket
	50	360855 Screw M5x20
	51	360789 Nut DIN557-M5
	52	152656 Roller L 20
	53	152657 Roller L 40
	54	152655 Axle
	55	886465 Washer 8,2x14x0,5
	56	330692 Circlip B8
	57	153503 Padding washer
	58	152653 Screw
	59	153897 Console
	60	153088 Locking nut
	61	153089 Collar
	62	127217 Spacer washer
	63	127218 Spacer washer
[1]	64	121841 Special spanner 150
[1];[2]	64*	154268 Spanner 173 set
	65	606738 Spanner 4
	66	360078 Spring washer 5H
	67	330704 O-ring 5x1,5 NBR 70
	201	170736 Operating instruction
	202	153873 Packaging
	204	179862 Grease 4 - 1,00 kg.

Note: *-from 21.10.2005; **-from 01.02.2007; ***-from 01.02.2008
[1] - only for FK 302; [2] - only for FK 303



FK 302
FK 303