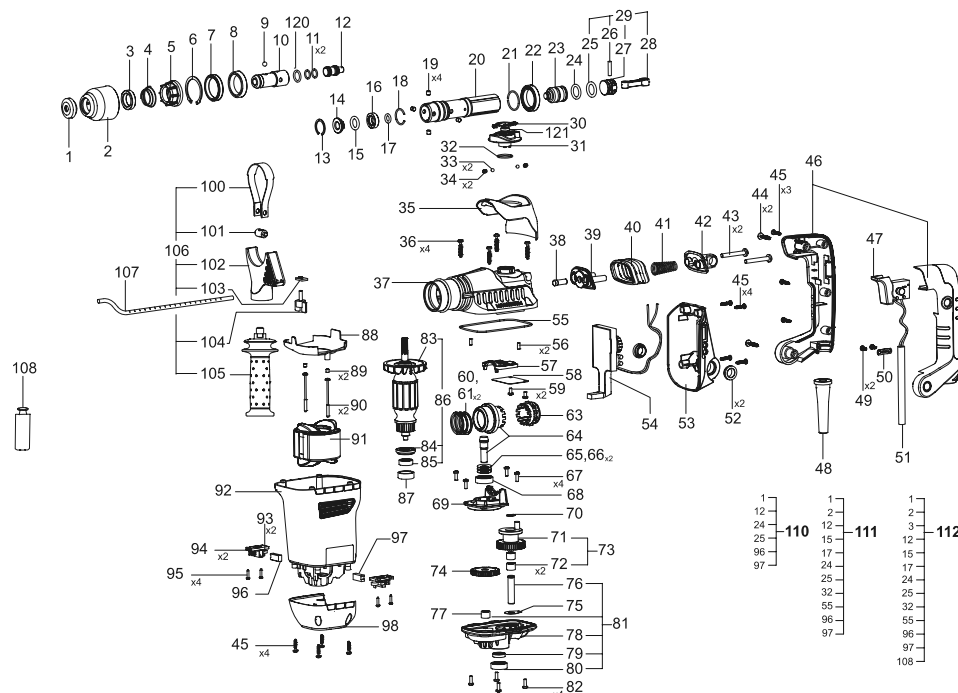


POS. No.	Ref.No.	Description	POS. No.	Ref.No.	Description
1	126964	Circlip	58	132117	Strip
2	132115	Releasing bush	59	360780	Screw F2-M4x8
3	130767	Ring	60	132156	Compensating washer 0,1
4	132043	Conical spring	61	132157	Compensating washer 0,2
5	132113	Locking ring	63	132111	Tooth coupling
6	330750	Circlip A42-5DS	64	132114	Gear set
7	331000	Gasket A32x42x7NBR	65	114023	Spacer washer
8	330986	Bearing 61806	66	114024	Spacer washer
9	330097	Pellet 6,747-100	67	360695	Screw M4X12
10	132035	SDS-Spindle	68	330116	Bearing 6001-2Z
11	330905	O-ring 11x2 - FPM70	69	132136	Bearing bed
12	132063	Intermediate stricker	70	330639	Circlip B10
13	331300	Circlip A24-5	71	132134	Gear shaft
14	132040	Front catch sleeve	72	330640	Bearing HK1010
15	330904	O-ring 14x4 - NBR70	73	132133	Gear shaft set
16	331283	O-ring 9x3 - FPM70	74	132127	Protective assembly
17	132027	Back catch sleeve	75	132180	Padding washer
18	330888	Spring ring	76	132126	Axle
19	330605	Roller 6X6 D5402	77	330640	Bearing HK1010
20	132107	Spindle	78	132123	Bearing shield
21	330994	Circlip A30	79	330995	Gasket A10x20x5NBR
22	330986	Bearing 61806	80	330945	Bearing 6000 2RSL P63 LDS18SpA
23	132064	Stricker	81	176655	Bearing shield set
24	330906	O-ring 17,04x3,53 - FPM70	82	360695	Screw M4X12
25	330907	O-ring 17x4 - FPM70	83	100429	Fan
26	132031	Axle	84	152532	Protective washer
27	132061	Piston	85	331210	Bearing 627 2RS P63LDS18SpA
28	132032	Connecting rod	86	132158	Armature set
29	132006	Piston set	87	164934	Rubber bush
30	132121	Cover	88	132141	Diffuser
31	176654	Change Knob Set	89	272961	Claming pin
32	330985	O-ring 19x2 NBR70	90	360870	Screw 3,9X60
33	330074	Pellet 5-200	91	132163	Stator set
34	116913	Spring	92	132140	Body
35	132118	Cover	93	112257	Spiral spring
36	361149	Screw K5x20	94	131521	Brush holder set
37	132104	Gear box	95	361303	Screw
38	132165	Tampon	96	173963	Brush set
39	132146	Support	97	173964	Brush set
40	132148	Gasket	98	132143	Cover
41	132171	Conical spring	100	132173	Bracket
42	132147	Joint	101	132175	Stretching plate
43	360909	Screw F2-M6x40	102	132168	Console
44	360677	Screw K5x25(D10)	103	132174	Plate for limiter
45	360654	Screw 4x18	104	111028	Butterfly bolt
46	132149	Casing handle set	105	173727	Handle
47	173398	Switch DGQ 1110A	106	132167	Front handle set
48	131939	Cord protector	107	151159	Depth gauge
49	360646	Screw 4x9,5	108	131287	Tube of oil
50	256500	Cord clamp	110	176666	First service pack
51	168119	Cord with a plug	111	176667	Second service pack
52	132150	Rubber bush	112	176668	Third service pack
53	132144	Cover	120	330340	O-ring 17X1,5B NBR70
54	132164	Electronic block	121	132185	Felt
55	132138	Gasket	201	132176	Operating instruction
56	115865	Pin	202	132166	Tool case
57	132116	Fork	204	179866	Grease Mobilux EPO - 1,00 kg.



BP 330CE