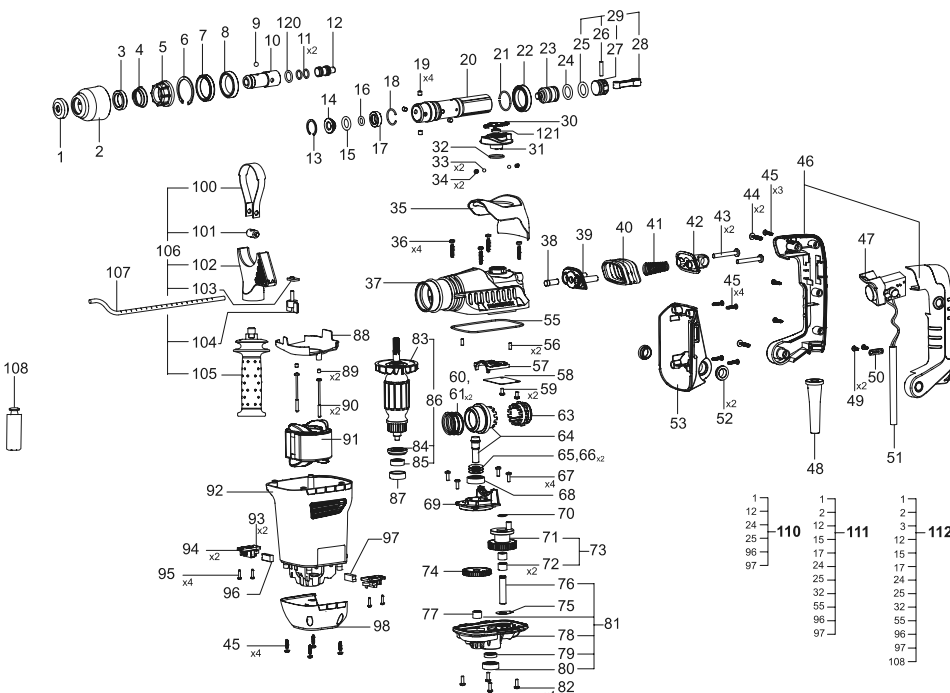


POS. No.	Ref.No.	Description	POS. No.	Ref.No.	Description
1	126964	Circlip	60	132156	Compensating washer 0,1
2	132115	Releasing bush	61	132157	Compensating washer 0,2
3	130767	Ring	63	132111	Tooth coupling
4	132043	Conical spring	64	132114	Gear set
5	132113	Locking ring	65	114023	Spacer washer
6	330750	Circlip A42-5DS	66	114024	Spacer washer
7	331000	Gasket A32x42x7NBR	67	360695	Screw M4X12
8	330986	Bearing 61806	68	330116	Bearing 6001-2Z
9	330097	Pellet 6,747-100	69	132136	Bearing bed
10	132035	SDS-Spindle	70	330639	Circlip B10
11	330905	O-ring 11x2 - FPM70	71	132134	Gear shaft
12	132063	Intermediate stricker	72	330640	Bearing HK1010
13	331300	Circlip A24-5	73	132133	Gear shaft set
14	132040	Front catch sleeve	74	132127	Protective assembly
15	330904	O-ring 14x4 - NBR70	75	132180	Padding washer
16	331283	O-ring 9x3 - FPM70	76	132126	Axle
17	132027	Back catch sleeve	77	330640	Bearing HK1010
18	330888	Spring ring	78	132123	Bearing shield
19	330605	Roller 6X6 D5402	79	330995	Gasket A10x20x5NBR
20	132107	Spindle	80	330945	Bearing 6000 2RSL P63 LDS18SpA
21	330994	Circlip A30	81	176655	Bearing shield set
22	330986	Bearing 61806	82	360695	Screw M4X12
23	132064	Stricker	83	100429	Fan
24	330906	O-ring 17,04x3,53 - FPM70	84	152532	Protective washer
25	330907	O-ring 17x4 - FPM70	85	331210	Bearing 627 2RS P63LDS18SpA
26	132031	Axle	86	132202	Armature set
27	132061	Piston	87	164934	Rubber bush
28	132032	Connecting rod	88	132141	Diffuser
29	132006	Piston set	89	272961	Claming pin
30	132121	Cover	90	360870	Screw 3,9X60
31	176654	Change Knob Set	91	132203	Stator set
32	330985	O-ring 19x2 NBR70	92	132140	Body
33	330074	Pellet 5-200	93	112257	Spiral spring
34	116913	Spring	94	131521	Brush holder set
35	132118	Cover	95	361303	Screw
36	361149	Screw K5x20	96	173890	Brush with a switch
37	132104	Gear box	97	173964	Brush set
38	132165	Tampon	98	132143	Cover
39	132146	Support	100	132173	Bracket
40	132148	Gasket	101	132175	Stretching plate
41	132171	Conical spring	102	132168	Console
42	132147	Joint	103	132174	Plate for limiter
43	360909	Screw F2-M6x40	104	111028	Butterfly bolt
44	360677	Screw K5x25(D10)	105	173727	Handle
45	360654	Screw 4x18	106	132167	Front handle set
46	132149	Casing handle set	107	151159	Depth gauge
47	173397	Switch Defond DGQ 1112-HF	108	131287	Tube of oil
48	131939	Cord protector	110	177858	First service pack
49	360646	Screw 4x9,5	111	177859	Second service pack
50	256500	Cord clamp	112	177860	Third service pack
51	168119	Cord with a plug	120	330340	O-ring 17X1,5B NBR70
52	132150	Rubber bush	121	132185	Felt
53	132181	Cover	201	132210	Operating instruction
55	132138	Gasket	202	132166	Tool case
56	115865	Pin	204	179866	Grease Mobilux EPO - 1,00 kg.
57	132116	Fork			
58	132117	Strip			
59	360780	Screw F2-M4x8			



BP 330E/AVS